

Trademarks

© 2011 unis Inc. All rights are reserved. No portion of this document may be reproduced without permission.

All trademarks and brand names mentioned in this publication are property of their respective owners.

Liability

While all efforts have been made to ensure the accuracy of all contents in this manual, we assume no liability for errors or omissions or by statements of any kind in this manual, whether such errors are omissions or statements resulting from negligence, accidents, or any other cause. The contents of this manual are subject to change without notice. We will not shoulder any legal liability, if users failed to follow the operation instructions in this manual.

Copyright

The scanning of certain documents, for example checks, bank notes, I.D. cards, government bonds, or public documents, may be prohibited by law and/or subject to criminal prosecution. We recommend you to be responsible and respectful of the copyrights laws when you are scanning books, magazines, journals and other materials.

Environmental Information

Recycle or disposal at end-of-life information, please ask local distributors or suppliers for recycle and disposal information. The product is designed and produced to achieve sustainable environmental improvement. We strive to produce products in compliance with global environmental standards. Please consult your local authorities for proper disposal.

The product packaging is recyclable.

Attention for recycling (For EU country only)

Protect your environment! This product should not be thrown into the household waste container. Please give it to the free collecting center in your community.

Screen Examples in This Manual

The screen shots in this guide were made with Windows 2000. If you are using Windows XP, Vista or 7, your screen will look somewhat different but functions the same.

Table of Contents

INTRODUCTION	1
HOW TO USE THIS GUIDE	1
A NOTE ABOUT ICONS	2
SAFETY PRECAUTIONS	2
SYSTEM REQUIREMENTS	3
BOX CONTENTS	4
CHAPTER I. INSTALLING THE SCANNER	5
SOFTWARE INSTALLATION REQUIREMENTS	5
HARDWARE REQUIREMENTS	5
INSTALLING AND SETTING UP THE SCANNER	6
<i>Step 1. Hassle-Free Lock Mechanism.....</i>	<i>6</i>
<i>Step 2. Connecting the Scanner to Your Computer</i>	<i>6</i>
<i>Step 3. Installing the Software</i>	<i>7</i>
SOFTWARE SETUP TROUBLESHOOTING.....	9
INSTALLING ADDITIONAL SOFTWARE.....	9
CHAPTER II. USAGE AND MAINTENANCE	11
OPERATING THE SCANNER.....	11
<i>Testing the Scanner.....</i>	<i>11</i>
<i>Using the Scanner Buttons.....</i>	<i>12</i>
<i>Defining Custom Button.....</i>	<i>13</i>
SCANNING THE FILMS.....	14
<i>Installing the Transparency Adapter</i>	<i>14</i>
<i>Film Holders</i>	<i>14</i>
<i>Scanning Negative and Positive Films.....</i>	<i>15</i>
<i>Important Notes about Scanning Film.....</i>	<i>17</i>
THE SCANNER UTILITY PROGRAM.....	18
<i>Connection Status</i>	<i>18</i>
<i>Aligning the Scanner.....</i>	<i>19</i>
LAMP CONTROL.....	19
<i>Via the Scanner Utility.....</i>	<i>19</i>
<i>Via the Power Save button on the Action Express Interface.....</i>	<i>20</i>
MAINTENANCE	20
APPENDIX A: SPECIFICATIONS	21
APPENDIX B: CUSTOMER SERVICE AND WARRANTY	22
SERVICE & SUPPORT INFORMATION (FOR EU COUNTRY ONLY)	22
STATEMENT OF LIMITED WARRANTY	23
FCC RADIO FREQUENCY STATEMENT	24

Introduction

Welcome to the world of unis scanners – the ultimate in computer imaging. Your new scanner will improve the professionalism of your day-to-day computing tasks by allowing you to input images and electronic text into your computer system.

Like all of our products, your new scanner is thoroughly tested and backed by our reputation for unsurpassed dependability and customer satisfaction.

Please remember to register your scanner. Registration may be completed in one of three ways:

- 1) By registering online via Unis's Web Site;
- 2) By printing out and faxing a completed registration card to Unis's customer service center;
- 3) By printing out and mailing the registration card directly to the Unis office nearest you.

See the last page of this user's guide for a complete list of Unis offices worldwide.

As a registered customer, you will receive customer support, new product information and software upgrades.

Thank you for choosing us as your scanner supplier. We hope you will continue to turn to us for additional quality products as your computing needs and interests grow.

How to Use This Guide

This User's Guide provides instructions and illustrations on how to install and operate your scanner. This guide assumes the user is familiar with Microsoft Windows. If this is not the case, we suggest you learn more about Microsoft Windows by referring to your Microsoft Windows manual before using your scanner.

The Introduction section of this manual describes the box contents and minimum computer requirements to use this scanner. Before you start installing your scanner, check the box contents to make sure all parts are included. If any items are damaged or missing, please contact the vendor where you purchased your scanner or our customer service directly.

Chapter I describes how to install scanner's software and connect the scanner to your computer. **Note: The scanner connects to your computer through the Universal Serial Bus (USB). If your computer does not support USB technology, you will need to purchase a USB interface card to add USB capabilities to your computer, or buy and install USB connectors if your motherboard has USB**

capabilities. This guide assumes that your computer is USB-ready and has a free USB port.

Chapter II describes how to test, maintain and clean your scanner. It also describes how to use the scanner utility program which helps you troubleshoot and fix connection problems which may have occurred during the scanner installation.

Appendix A contains the Specifications of the scanner you purchased.

Appendix B contains our limited warranty agreement and FCC statement concerning the product.

A Note about Icons

This guide uses the following icons to point out information that deserves special attention.



Warning

Warning: A procedure that must be followed carefully to prevent injury, or accidents.



Attention

Attention: Instructions that are important to remember and may prevent mistakes.



Information

Information: Optional tips for your reference.

Safety Precautions

Before using this device, please read the following important information to eliminate or reduce any possibility of causing damage and personal injury.

1. Usage, the product is for indoor use in dry locations. Moisture condensation may occur inside this device and cause malfunction at these conditions:
 - when this device is moved directly from a cold to a warm location;
 - after a cold room is heated;
 - when this device is placed in a damp room.

To avoid the moisture condensation, you are recommended to follow the procedure:

- i. Seal this device in a plastic bag for it to adapt to room conditions.
- ii. Wait for 1-2 hours before removing this device from the bag.

2. Do use the power adapter and USB cable provided with the scanner. Use of other power adapter and cables may lead to malfunction.
3. Keep the space around the AC adapter clear in case you need to quickly unplug the AC adapter during emergencies.
4. Damaged wire could cause fire or electrical shock. Keep the power cord straight and without being twisted, bended, or scraped.
5. Unplug this device if you don't need to use for a certain period of time, such as, during night or long weekend, to avoid any risks of causing fire.
6. Do not attempt to disassemble the scanner. There is danger of an electrical shock and opening your scanner will void your warranty.
7. Be sure not to bump or knock the scanner glass as it is fragile and could break.

System Requirements¹

- Windows/Intel Compatible Personal Computer
- Intel Pentium® IV 2.0 GHz CPU or above
- CD-ROM Drive
- 1 GB RAM
- 700 MB Free Hard Disk Space (800 MB Recommended)
- USB Port
- Microsoft™ Windows 2000 Professional / XP/ Vista / 7

NOTE: Windows NT 4.0 does not support Universal Serial Bus (USB) connectivity.

- Video card that supports 16-bit color or greater

¹ Higher requirements might be needed when you scan or edit a large quantity of image data. The system requirements here are only a guideline, as in general the better the computer (motherboard, processor, hard disk, RAM, video graphic card), the better the results.

Box Contents²



1. Scanner³
2. USB Cable
3. Power Adapter
4. Setup / Application CD-ROM
5. Quick Guide
6. Reflective Document Mat
7. Film Holders

² Save the box and packing materials in case you need to transport this scanner in the future.

³ The scanner illustration(s) may appear different than from the actual scanner itself.

Chapter I. Installing the Scanner

Before installing your scanner, please verify that you have all of the proper components. A list of the package contents is provided in the *Box Contents* section of this guide.

Software Installation Requirements

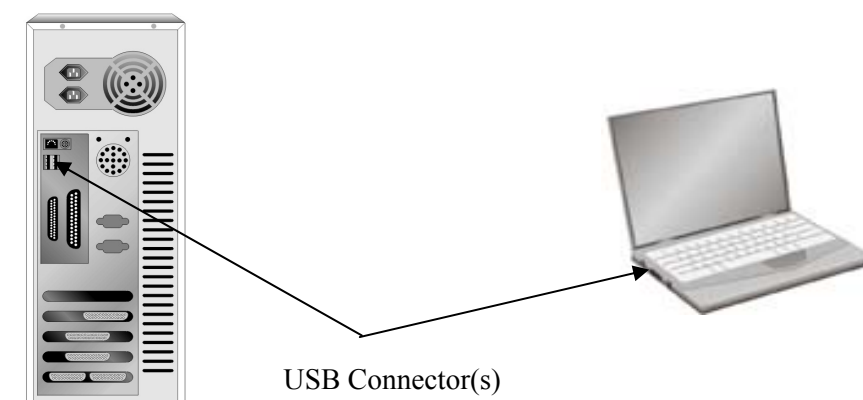
Your scanner comes with the OCR software (FineReader), document management software (Presto! PageManager), the scanner's driver, Scanner Utility and Action Express software. All of these software applications use approximately 700 megabytes of hard disk space after they are installed into your computer. To ensure ample room for the installation, as well as for scanning and saving images, a minimum of 800 megabytes of hard disk space is recommended.

The Unis Scanner can only operate under the Microsoft Windows 2000 Professional, XP, Vista or 7 operating system.

Hardware Requirements

This scanner connects to your computer through the Universal Serial Bus (USB) which supports *hot Plug and Play*. To determine whether your computer is USB-capable, you must check the rear of your PC to locate a USB jack that looks the same as the one pictured below. Note that on some computers, the USB port at the rear of the computer may be occupied and additional ports may be found on the monitor or keyboard. If you are having trouble in locating the USB port on your computer, please refer to the hardware manual that came with your computer.

Upon examination, you should find one or two rectangular USB ports, which usually appear as shown below.



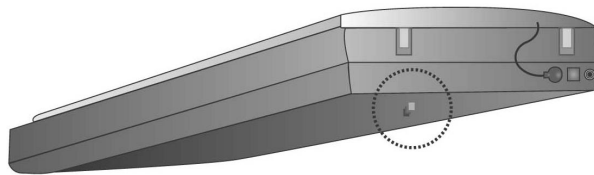
If you don't find such USB ports on your computer, then you need to purchase a certified USB interface card to add USB capabilities to your computer.

Installing and Setting up the Scanner

Please follow the step-by-step procedures described below to install the Unis Scanner.

Step 1. Hassle-Free Lock Mechanism

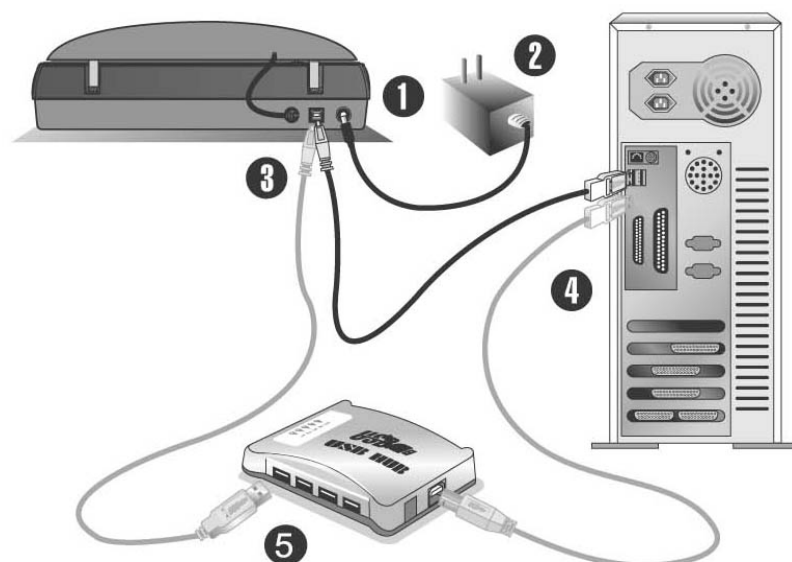
This scanner has an automatic locking mechanism to hold the scanning head in place during transportation. When the locking switch (located on the scanner's underside) is pressed, it automatically unlocks the scanning head; when not pressed, it automatically locks up the scanning head again.



Information

- Always place your scanner on a flat and smooth surface before proceeding the scanner setup or any scanning task.
- When you need to move the scanner, do keep the locking switch NOT PRESSED to ensure accurate and problem-free use of your scanner.

Step 2. Connecting the Scanner to Your Computer

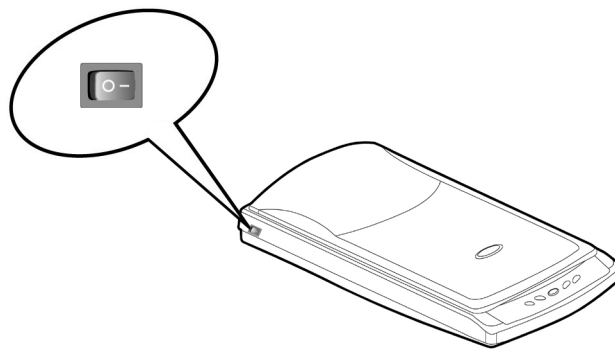


1. Plug the power adapter into the scanner's power receptor.
2. Plug the other end of the power adapter into a standard AC power outlet.

3. Plug the square end of the included USB cable to the USB port at the rear of the scanner.
4. Plug the rectangular end of the USB cable to an available USB port on the back of your computer.
5. If you plan to connect your scanner to a USB hub⁴, make sure that the hub is connected to the USB port in your computer. Next, connect the scanner to the USB hub.

Step 3. Installing the Software

1. Switch the scanner power on.



2. If the USB components on your computer are functioning correctly, they will automatically detect the scanner causing the “Add New Hardware Wizard” or “Found New Hardware Wizard” to be launched. Note: If your computer was off when you connected the scanner, the “Add New Hardware Wizard” message will be displayed when you turn the computer on and when Windows starts.
3. **For Windows 2000**
 - a. Click on the [Next] button when the “Add New Hardware Wizard” window is displayed.
 - b. Select “SEARCH FOR THE BEST DRIVER FOR YOUR DEVICE [RECOMMENDED]” and click on the [Next] button.
 - c. The next window will ask you where to search to find the drive. Select [CD-ROM drive], and deselect [Floppy disk drives] if it is checked.
 - d. Insert the Setup/Application CD-ROM, included with your scanner, into your CD-ROM drive and then click on the [Next] button.
 - e. Click on the [Next] button in the window that appears.
 - f. During the process of the installation, a message “Digital Signature required” might be prompted. Please ignore it, and click on [Yes] to continue the installation without any misgiving at your scanner functioning. Afterwards, please skip to Step 7.

⁴ The USB hub is not included with the scanner.

4. **For Windows XP**

- a. Insert the Setup/Application CD-ROM, included with your scanner, into your CD-ROM drive.
- b. Select “INSTALL THE SOFTWARE AUTOMATICALLY [RECOMMENDED]” and click on the [Next] button.
- c. Click on the [Next] button in the window that appears. Afterwards, please skip to Step 7.

5. **For Windows Vista**

- a. Select “Locate and install driver software (recommended)” when the “Found New Hardware” window is displayed.
- b. Click on the [Continue] button when the “User Account Control” dialog pops up.
- c. Insert the Setup/Application CD-ROM, included with your scanner, into your CD-ROM drive when the system prompts you “Insert the disc that came with your Unis Scanner”, and click on the [Next] button.
- d. During the process of the installation, a message “Windows can’t verify the publisher of this driver software” might be prompted. Please ignore it, and click on [Install this driver software anyway] to continue the installation without any misgiving at your scanner functioning. Afterwards, please skip to Step 7.

6. **For Windows 7**

When the Setup/Application CD is for several scanner models

- a. Insert the Setup/Application CD-ROM, included with your scanner, into your CD-ROM drive. Click Run install.exe in the ”AutoPlay” window.
- b. Click on the “Yes” button if the “User Account Control” dialog pops up. Follow the instructions in the pop-up installation message.
- c. In the ”Device Manager” window, right-click on this scanner under ”Other devices” and select ”Update Driver Software” from the pop-up menu. Click ”Browse my computer for driver software” in the window that appears, and click the ”Browse” button.
- d. In the ”Browse For Folder” window, select the folder or the CD-ROM drive that contains this scanner driver and click the ”OK” button to return to the previous screen. Click the ”Next” button. Afterwards, please skip to procedure 8.

When the Setup/Application CD is for one scanner model

- a. Insert the Setup/Application CD-ROM, included with your scanner, into your CD-ROM drive. Click Run install.exe in the ”AutoPlay” window.
- b. Click on the “Yes” button if the “User Account Control” dialog pops up. If the pop-up wizard window appears click “Next”, and click “Install this driver

software anyway” in the “Windows Security” window then click “Finish” in the wizard window. Afterwards, please skip to procedure 8.

7. When the system completes the installation, click on the “FINISH” button.
8. Follow the on-screen instructions to install all software that your new Unis Scanner requires.
9. After the software is installed, close all open applications and click on the FINISH button to restart your computer.



Attention

If the scanner installation is not started and displayed automatically on the screen, click START, select RUN and type in [d:\setup] (where d: is the drive letter assigned to the CD-ROM drive of your computer.)

Software Setup Troubleshooting

Carefully review the steps outlined in this guide and the Quick Installation Guide that accompanied your scanner.

If you are still having problems, please check that:

- You have 700MB of free space on your hard disk drive.
- The scanner is plugged in and has power.
- You are using the USB cable supplied with the scanner.
- The square end of the USB cable is plugged into the rear of the scanner.
- The rectangular end of the USB cable is plugged into the back of your computer.

If you deviated from the installation procedures defined in this manual, please unplug the USB cable from the scanner and reinstall the software from the CD-ROM. To reinstall your scanner’s software, click [Start] | [Run], then type [D:\Install] (where D represents the letter of your CD-ROM drive). Carefully follow all the installation instructions presented in the Setup Wizard. Reboot your computer when prompted, and plug the USB cable back into the scanner while your computer is still turned on.

If you still need help, please local business hours, contact the dealer when purchasing, or call violet scanner call center :400-700-8818, to do further consultation.

Installing Additional Software

Your scanner is TWAIN compliant and functions with virtually all available TWAIN compatible software. If you purchase additional software to be used with your scanner, please make sure that it conforms to the TWAIN standard.

Chapter II. Usage and Maintenance

Operating the Scanner

Your scanner accepts documents as small as business cards and as large as A4-sized documents. However, some software programs have limitations as to the information they can handle. The capacity of the computer's memory and free space on your hard drive can also limit the physical size of the document that you scan.

There are two different ways to operate the scanner:

1. From an image-editing program that can acquire images from the scanner.
2. By using the Action Express program that is automatically installed as your scanner software.

Your scanner needs to be driven by some type of software program. Since all documents or images (whether text or pictures) that are acquired from the scanner are treated by your computer as images, most scanning will probably be done from an image-editing program where you can view, edit, save and output the scanned images. An image-editing program has been bundled with your scanner on the included Setup/Application CD-ROM. It will allow you to alter and correct any scanned images by using a variety of filters, tools and effects.

What about scanning text documents and editing them in a word processor? This is the role of Optical Character Recognition (OCR) software. OCR software converts the image files that are created from scanning text documents into text files that can be viewed, edited and saved by word processors. An OCR program has also been bundled on the included Setup/Application CD-ROM, and if you wish to use the scanner in this way you should install the OCR software that is included.

Action Express is a program that allows you to conveniently scan images and text without the need to work directly within any image-editing application.

For further information about using Action Express, please refer to the Action Express on-line help.

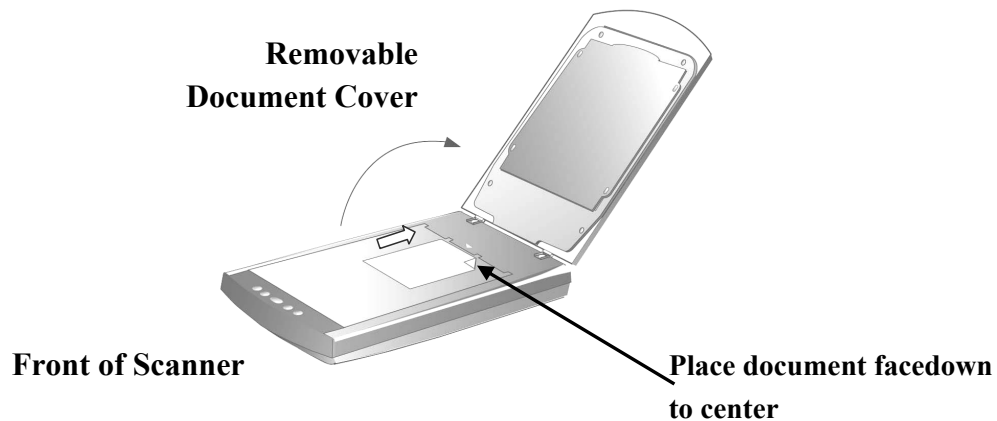
Testing the Scanner⁵

The following describes how you can check if the scanner is properly functioning with your computer and the scanning software by performing your first scan with our bundled

⁵ The scanner illustration(s) may appear different than from the actual scanner itself.

image-editing application **TH-OCR** . When you get familiar with the scanning, you may alternatively use other TWAIN compatible scanning program or image-editing application to do your scanning projects. Before testing your scanner, double check to make sure that all connections are securely fastened.

To properly test your scanner, please perform the following steps:



1. Open the scanner's document cover and place a picture onto the scanner glass headfirst and face-down.
2. Gently close the document cover.
3. Click on the Windows **Start** button to launch TH-OCR.
4. If you have only one scanner connected with your computer, please skip to Step 5. If you have more than one scanner or other imaging device installed on your computer:
Click **Select Scanner** from the **File** menu of TH-OCR and then choose this scanner as the default scanning source.
5. Within TH-OCR, click on **File | Acquire | Acquire**.
6. The TWAIN interface will open.
7. Click on the **Scan** button.
8. If an image appears on your screen, your scanner is working properly.



If the test failed in any way, please refer to *The Scanner Utility Program* section of this manual and follow the instructions therein.

Information

Using the Scanner Buttons



Your scanner is equipped with function buttons designed to make your scanning experience more convenient and efficient. There are three modes you can choose from to connect with your buttons:

Auto Mode: The IDEAS Technology will scan the images automatically with optimal settings and send the scanned image to the post processing software. This mode offers you the most effortless scanning.

EZ Mode: If you have various scanning jobs with the same setting, this mode is recommended to achieve the efficiency. (It doesn't support this mode in Negative Scan and Positive Scan.)

Advanced Mode: If you want to control and tailor each scan closely matching your own needs, this mode with many available choices is recommended.

You can change the default Auto Mode by following the step-by-step procedure:

1. Right click the Action Express icon  on the Windows system tray
2. Choose **Button Configuration** from the pop-up menu.
Or , if you have opened the Action Express interface by right clicking the Action Express icon  and selecting **Action Express**, just click the **Button Configuration** button on the Action Express interface.
3. On the left hand side of Button Configuration window, select the button you want to set up.
4. Choose EZ mode or Advanced Mode.
5. Click **OK** or **Apply**.



Information


For further information about using Action Express, please refer to the on-line help by either way:

1. Clicking the Help button when you are using the program.
 2. Pointing to **All Program | (your scanner model name)** from Windows Start menu, and selecting Action Express Help.
-
-

Defining Custom Button

The users may turn the Custom button on the scanner panel into a multifunctional assistant by defining it as other function that is included in the Action Express. Once the Custom button is defined, the selected function will be launched with one press on the button.

The following describes how to define your Custom button by using Button Manager in Action Express.

1. Right click the Action Express icon  on the Windows system tray and select [Button Manager] from the pop-up menu.
2. The Button Manager window will pop up.
3. Click the up and down arrows to select the Custom button.

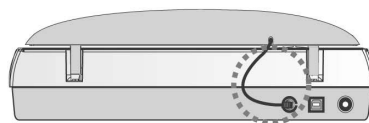
4. Choose a desired function from the drop-down list of [Select the button function].
5. Click [OK] to apply the setting.
6. Once you press the Custom button on the scanner, the defined function will be launched.

Scanning the Films

Your scanner provides an easier and quicker way to scan transparent materials such as positive or negative film. With the special designed film holders supplied with your scanner, you may have a very different experience in proceeding scanning task. Read the following instructions carefully to learn how to scan the films.

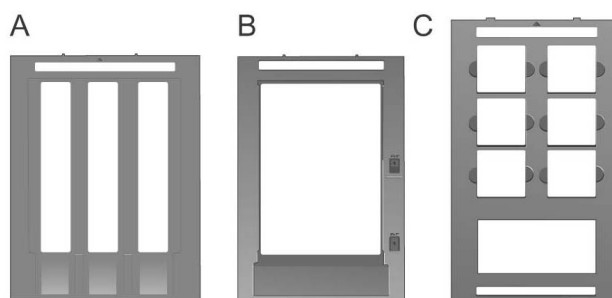
Installing the Transparency Adapter

The transparency adapter is located on the underside of the scanner lid and is a necessary tool for scanning slides, filmstrips, or sheet films. Ensure the transparency adapter cable is plugged in (as illustrated) before you start scanning the films.



Film Holders

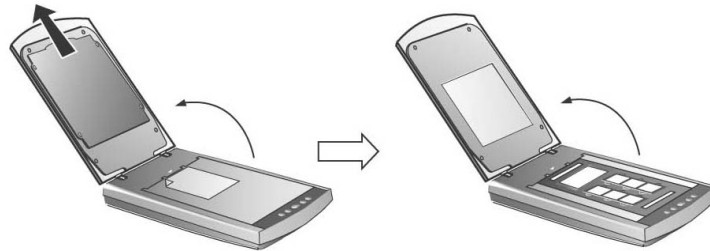
There are three types of film holders. The film holders guarantee the correct position of the films while being scanned.



- A. For scanning 35mm filmstrips (max. 12 frames)
- B. For scanning sheet films (max. 13x18 cm)
- C. For scanning 35mm slides (max. 6 slides) and 120/220 films(6x4.5 cm/ 6x6 cm/ 6x7 cm/ 6x8 cm/ 6x9 cm/ 6x12 cm)

Scanning Negative and Positive Films

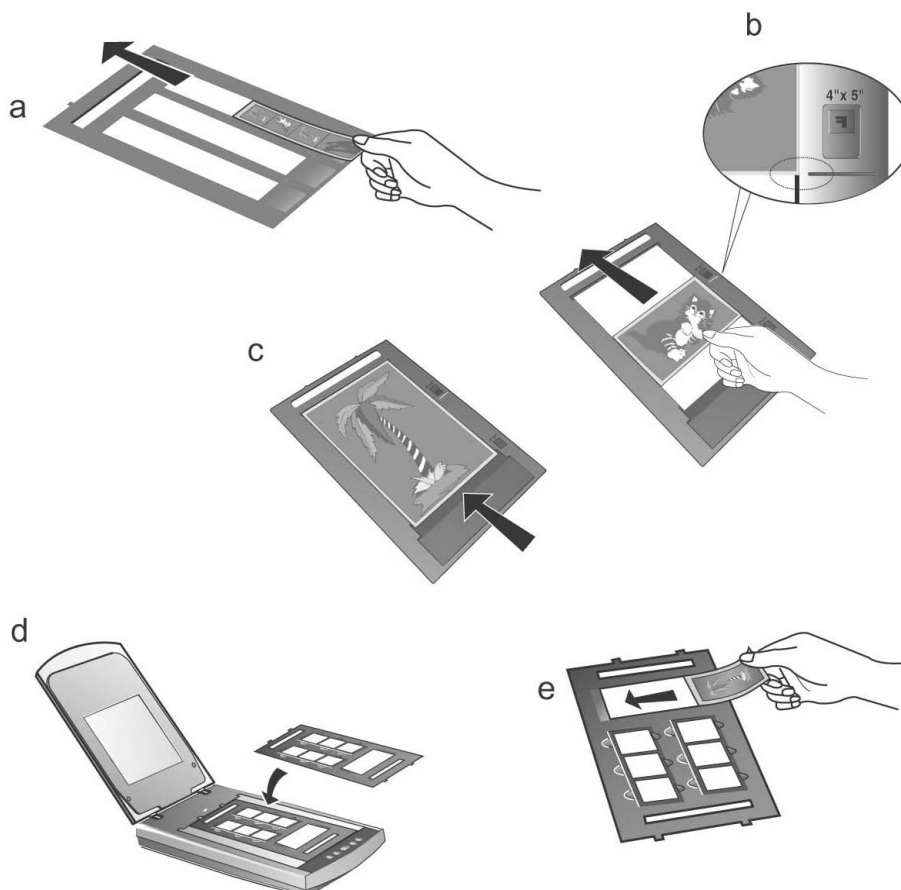
1. Remove the reflective document mat. Hold the top of the mat, and gently pull it upward until it is separated from the document cover.



2. Insert the film face down into the proper compartment on the film holder. Adjust the position of the inserted film, so that the desired image appears in the view window.

Caption

- | | |
|---|-------------------------------------|
| a. Filmstrip | b. Sheet Film: 4"x5" (10.2x12.7 cm) |
| c. Sheet Film: 5"x7" (13x18 cm) | d. 35mm Slides |
| e. 120/220 Film (6x4.5 cm/ 6x6 cm/ 6x7 cm/ 6x8 cm/ 6x9 cm/ 6x12 cm) | |

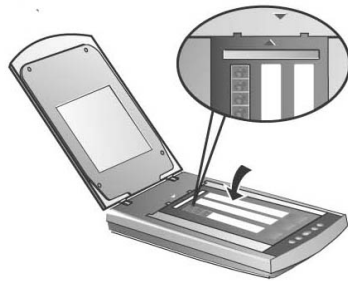


- If you are scanning 35mm slides, place the film holder on the scanner first, and then place the slides in the holder.

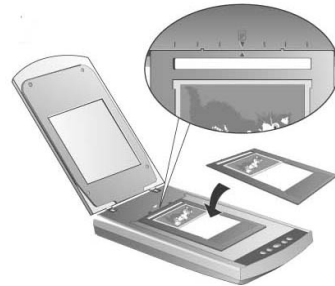
-
- Information**
- When inserting the 4"x5" (102x127 mm) sheet film, move the film forward within the film compartment until the opposite end of the film gets aligned with the arrow sign of the 4"x5" mark on the right side of the film holder.
 - If you have only one 35mm filmstrip to scan, you can choose any of the three compartments on the film holder for filmstrips.
-

3. Place the film holder on the scanner glass, and align the positioning aids of the film holder to fit into the indentations of the scanner housing. The arrow sign of the particular film compartment must be in alignment with the inverse-arrow sign carved on the scanner housing.

a.



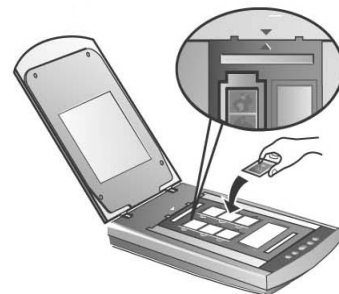
b.



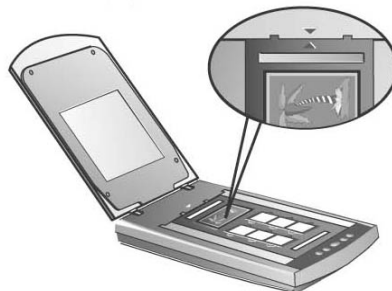
c.



d.



e.





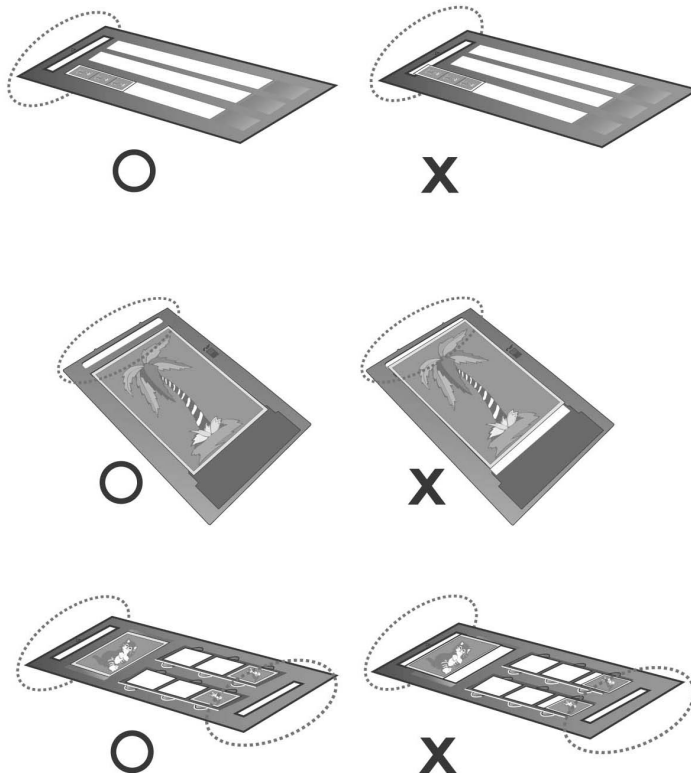
Information

When you use the film holder to scan 35mm slides or 120/220 films, ensure to keep the side with the ready-to-be scanned film toward the inverse-arrow sign on the scanner housing.

4. Double click the Action Express icon on the Windows system tray to launch Action Express.
5. Click the [Negative Scan] button if you're scanning negative film. Click the [Positive Scan] button if you're scanning positive film.
6. The default IDEAS technology will scan the image automatically with optimal settings and send the scanned image to the post processing software.

Important Notes about Scanning Film

- Do not cover any small compartment below each arrow sign on the film holder because it is necessary for calibration.



- Always replace the reflective document mat onto the scanner's document cover after you finish scanning the films.
- Make sure the film is properly loaded into the film holder and the film holder is correctly positioned on the scanner glass.

- Make sure the proper SCAN SOURCE and FILM SIZE are selected before proceeding the scanning task.
- It is recommended to use a higher resolution (> 1200dpi for 35mm films, 120/220 films, or large format sheet films) when you proceed the film scanning task to prevent the scan images from losing the quality while you enlarge the size of the images.

The Scanner Utility Program

The Scanner Utility Program can help you get your new scanner up and running. In addition, it contains a number of other features to help you tailor and control the scanner.


Two features of the Scanner Utility program are **the scanning lamp controls** and **the scanning position alignment utility**. The Scanner Utility allows you to turn the scanning lamp on and off, and define an idle time for the scanning lamp to automatically turn itself off. Also, it allows you to define the exact position on the scanning glass where scanning will begin. The scanner lock was designed to hold the scanning lamp in place during shipping, but some refinement of the initial scanning position may still be necessary.





Information

The Scanner Utility program does NOT affect the quality of scanned images. It is only used to establish a connection with the scanner. Settings that affect the scanned image (i.e., color, size, readability, clarity, etc.) can be found in the scanner software programs and especially the TWAIN interface.

Connection Status

The first step to take when troubleshooting connection problems is to check all plug connections. The Action Express icon , located on the Windows system tray, indicates if the scanner software is properly launched, and the scanner and computer are communicating with each other.

Appearance	Status
	The Action Express program has been successfully launched and the scanner is connected with the computer, ready to scan images.
	The scanner is not connected with the computer.
No Display	You have chosen to terminate the Action Express program, no matter the scanner is connected or disconnected with the

	computer.
--	-----------

Aligning the Scanner

In most cases, the scanner doesn't need to be aligned but there are instances when the alignment might be required. You need to align the scanner only if parts of the scanned document are missing from any of its edges. For example, the heading of a document might be missing from the top edge after the document has been scanned.

To align the scanner, follow the steps below:

1. Place a photograph on the top right side of the scanner glass (near the back of the scanner). Please note that only part of the photograph will be scanned.
2. Right click the Action Express icon on the Windows system tray and select Scanner Utility.
3. Once the Scanner Utility window is open, click the [Start Alignment] button. Part of the photograph will be displayed in the ALIGNEMENT window.
4. Click on the arrow buttons until the top left corner of the scanned photograph aligns with the top left corner of the preview window.
5. Click on [OK] when the alignment has been completed.

Lamp Control

The scanner lamp may be turned ON and OFF manually via the Scanner Utility or the Power Save. Read the following paragraphs describing how to control the scanner lamp via the Scanner Utility or the Power Save button.

Via the Scanner Utility

Right click the Action Express icon on the Windows system tray and select Scanner Utility. In the window that opens, find the Lamp Control section.

You may set the default time for the lamp to automatically turn off after a scan by

1. Clicking the [Turn Lamp off after...] button.
2. Clicking the up or down arrows to set up the time to turn off the scanner lamp.

Or, you can set the lamp being always illuminated by clicking the [Always Keep Lamp on] button.

Via the Power Save button on the Action Express Interface

The Power Save button enables users to turn off/on the scanner lamp immediately to conserve energy with simply one click. You may find the Power Save in Action Express window:

How to turn OFF the scanner lamp

- Click the Power Save button to turn off the lamp.

How to turn ON the scanner lamp

- Press any function button on the scanner.

Maintenance



To keep your scanner working smoothly, take a moment to review the following maintenance tips.

Attention

- Avoid using the scanner in a dusty environment. When it is not in use, keep the scanner covered. Dust particles and other foreign objects may damage the unit.
- Do not subject the scanner to excessive vibration. It may damage the internal components.
- Clean the scanner glass by lightly spraying a non-abrasive glass cleaner onto a soft lint-free cloth. Then, wipe the glass thoroughly with the cloth. **DO NOT SPRAY CLEANER DIRECTLY ONTO THE SCANNER GLASS.** Excess liquid residue may fog or damage the scanner.
- Your scanner operates best in temperatures between 10° C to 40° C (50° F to 104° F).

Appendix A: Specifications⁶

Physical dimensions	440 x 265 x 79 mm (17.32" x 10.43" x 3.11")
Weight	2.8 Kgs (6.17 Lbs)
Operating Temperature	10° C to 40° C (50° F to 104° F)
Max. Scan Area	Reflective: 216 mm x 297 mm (8.5 x 11.69 in.) Transparency: Positive or negative films of 35 mm filmstrip, 6 pcs 35 mm slides, 120/220 film (max. 6 x12 cm) or sheet film (max. 13x18 cm)
Scan Method	Single-Pass
Scan Modes	Color: Input 48-bit; Output 24/48-bit Grayscale: Input 16-bit; Output 8/16-bit Black & White: 1-bit
Resolution	Max. Hardware Resolution: 3200 dpi (main scan) x 6400 dpi (sub scan) Max. Interpolated Resolution: 24000 dpi
Scanning Materials	Reflective color or black-and-white originals, 35 mm slides, 35mm filmstrip, 120/220 film (max. 6x12 cm), sheet films (max. 13x18 cm)
Protocols	TWAIN Compliant
Connection	USB 2.0 High Speed
Lamp type	Cold Cathode Lamp
Power adapter	Power Output DC 24V, 0.75A
Power Consumption	Operation: 18 watts maximum Idle: ≤ 5 watts

⁶ Hardware specifications may change at any time without prior notice.

Appendix B: Customer Service and Warranty

If you encounter problems with your scanner, please review the installation instructions and troubleshooting suggestions contained in this guide.

To avoid delays, please have the following information available before calling:

- **Scanner name and model number**
- **Scanner serial number (located at rear of scanner near port connectors)**
- **A detailed description of the problem**
- **Your computer manufacturer and its model number**
- **The speed of your CPU (Pentium 133, etc.)**
- **Your current operating system and BIOS (optional)**
- **Name of software package(s), version or release number and manufacturer of the software**
- **Other USB devices installed**

Service & Support Information (For EU country only)

Where appropriate, the period of availability of spare parts and the possibilities of upgrading products information. Please ask local distributors and suppliers for spare parts information and product upgrade information.

Information requested by relevant Implementing Measure. Please ask local distributors and suppliers for the related information of Implementing Measure test report.

Do not dispose anything of products before you ask local distributors and suppliers to get correct information for decreases of environmental impact with right methods and procedures.

If you want to disposals the product and/or an accessory, please ask local distributors and suppliers to get the contact information of nearest disposal manufactures.

If you have any maintenance inquiry, please ask local distributors and suppliers to get the contact information of nearest maintenance center in order to extend the product usage life time.

If you want to maintain and clearance the product, please ask local distributors and suppliers to get the right information of nearest stores.

Statement of Limited Warranty

This Statement of Limited Warranty applies only to the options you originally purchase for your use, and not for resale, from an authorized reseller.

The manufacturer warranty includes all parts and labor, and is not valid without the receipt of original purchase. To obtain warranty service, you may contact the authorized dealer or distributor, or visit our website to check out the available service information, or send a request via E-mail for further help.

If you transfer this product to another user, warranty service is available to that user for the remainder of the warranty period. You should give your proof of purchase and this statement to that user.

We warrant that this machine will be in good working order and will conform to its functional descriptions in the documentation provided. Upon provision of proof of purchase, replacement parts assume the remaining warranty of the parts they replace.

Before presenting this product for warranty service, you must remove all programmes, data and removable storage media. Products returned without guides and software will be replaced without guides and software.

This Limited Warranty service does not provide for carry-in exchange when the problem results from accident, disaster, vandalism, misuse, abuse, unsuitable environment, programme modification, another machine or non-vendor modification for this product.

If this product is an optional feature, this Limited Warranty applies only when the feature is used in a machine for which it was designed.

If you have any questions about your Limited Warranty, contact the approved retailer from whom you bought the product or the manufacturer.

THIS LIMITED WARRANTY REPLACES ALL OTHER WARRANTIES, EXPRESS OR IMPLIED, INCLUDING, BUT NOT LIMITED TO, THE IMPLIED WARRANTIES OF MERCHANTABILITY AND FITNESS FOR A PARTICULAR PURPOSE. HOWEVER, SOME LAWS DO NOT ALLOW THE EXCLUSION OF IMPLIED WARRANTIES. IF THESE LAWS APPLY, THEN ALL EXPRESS AND IMPLIED WARRANTIES ARE LIMITED IN DURATION TO THE WARRANTY PERIOD. NO OTHER WARRANTIES APPLY AFTER THAT PERIOD.

Some jurisdictions do not allow limitations on how long an implied warranty lasts, so the above limitation may not apply.

Under no circumstances are we liable for any of the following:

1. Third party claims against you for losses or damages.
2. Loss of, or damage to, your records or data; or
3. Economic consequential damages (including lost profits or savings) or incidental damages, even if we are informed of their possibility.

Some jurisdictions do not allow the exclusion or limitations of incidental or consequential damages, so the above limitation or exclusion may not apply to you.

This Limited Warranty gives you specific legal rights, and you may also have other rights that vary from jurisdiction to jurisdiction.

To obtain the warranty service, you may:

- contact the authorized dealer or distributor.
- visit our website to check out the up-to-date service.
- send a request via E-mail for further help.

FCC Radio Frequency Statement

This equipment has been tested and found to comply with the limits for a Class B digital device, pursuant to part 15 of the FCC rules. These limits are designed to provide reasonable protection against harmful interference in a residential installation.

This equipment generates, uses and can radiate radio frequency energy and, if not installed and used in accordance with the instructions, may cause harmful interference to radio communications. However, there is no guarantee that interference will not occur in a particular television reception (which can be determined by turning the equipment off and on), the user is encouraged to try to correct the interference by one or more of the following measures:

- √ Reorient or relocate the receiving antenna.
- √ Increase the separation between the equipment and receiver.
- √ Connect the equipment to an outlet on a circuit different from that which the receiver is connected.
- √ Shielded interconnect cables and shielded power cord which are supplied with this equipment must be employed with this equipment to ensure compliance with the pertinent RF emission limits governing this device.
- √ Consult the dealer or an experienced radio/TV technician for help if the conditions persist.
- √ Changes or modifications not expressly approved by the manufacturer or authorized service center could void the user's authority to operate this equipment.